

## How does your Garden Grow?

Hydref 2019

### How Does Your Garden Grow?

In 2017 Clybiau Plant Cymru Kids' Clubs was awarded funding through Groundworks, Tesco Bags of Help to develop and pilot 10 bilingual low cost/no cost activity cards, designed around how to use recycled materials to develop a garden space whilst building lasting intergenerational relationships and community awareness and respect of others.

The activities were developed by an experienced Training Officer, who then piloted the activities with the staff and children at Anglesey Childcare Providers, St Mary's Holiday Club. Through feedback from the pilot and input from staff at Clwb San Sior, Conwy, the activity cards were amended. Clwb San Sior have a flourishing garden that they tend with the children.

Although the original funding was not sufficient to complete the project, we were delighted to offer support to Anglesey Childcare Providers to apply for funding from The Big Lottery - Awards for All to enable completion of the project. Anglesey Childcare Providers have been an integral part of this project since its inception.

With this funding 'How Does Your Garden Grow?' activity cards were designed and the final activities were delivered to the Childcare Setting.

The activities are aimed at children aged 3 to 11 years old, focussing on developing new skills linked to gardening, the environment and recycling through fun, engaging play activities. A variety of topics are covered including how to re-use objects to make small outdoor spaces, recycle objects to make greenhouses and planters and how to create compost. The activities also encourage children to learn about the importance of growing their own food whilst gaining knowledge and skills from more experienced people around them.

Our North Wales Training Officer delivered the new and improved activities and a set of activity cards to Anglesey Childcare Providers, and following the session an evaluation took place.

Out of a potential score of 5 (1 being poor 5 being excellent), the Playworkers thought the content, structure, organisation of the training was good scoring 5 out of 5, and the delivery was also just right scoring 5 out of 5. Comments included:

- **"That was great training, all the children in different age group, they all enjoyed it, 'specially using the tools, I did not expect that – think that was amazing idea"**
- **"Good ideas on how to do gardening with the children"**
- **"The trainer was very knowledgeable,**
- **"explained step by step to the children what they needed to do in a safe and fun way"**

The staff also commented that the Training Officer had provided good ideas and they were keen to continue with the project and engaging with the local community by bringing together children and Playworkers from Anglesey Childcare Providers, St Mary's Out of School Childcare Club and gardening volunteers from the local community to work together to develop the outdoor space at the Club.

Some of the children's comments included:

- "(I liked) Planting the flowers, putting them in the soil"
- "I think it was great, I liked using hammer and nails"
- "Building was my favourite"
- "I didn't like waiting for my turn"

Through discussion with them they were excited to see the herbs grow and develop their garden further.

Hydref 2019

## Sut Mae'ch Gardd yn Tyfu?

Yn 2017 dyfarnwyd ariannu i Clybiau Plant Cymru Kids' Clubs drwy Fagiau Cymorth Tesco, Groundworks, i ddatblygu a threalu 10 cerdyn gweithgaredd dwyieithog dim cost/cost isel, wedi eu dylunio o gylch sut i ddefnyddio deunydd wedi'i ailgylchu i ddatblygu man gardd gan adeiladu perthnasau rhyng-genedlaethol hirhoedlog, ymwybyddiaeth gymunedol a pharch at eraill.

Datblygwyd y gweithgareddau gan Swyddog Hyfforddi profiadol, a aeth ati i dreialu'r gweithgareddau gyda'r staff a'r plant yng Nghwb Gwyliau St Mary's, Darparwyr Gofal Plant Ynys Môn. Drwy adborth o'r peilot a mewnbwn gan staff Clwb San Siôr, Conwy, diwygiwyd y cardiau gweithgaredd. Mae gan Glwb San Siôr ardd sy'n ffynnu, un y maent yn gofalu amdani gyda'r plant.

Er nad oedd yr ariannu gwreiddiol yn ddigon i gwblhau'r prosiect, roedd yn bleser mawr gennym gynnig cymorth i Ddarparwyr Gofal Plant Ynys Môn i wneud cais am ariannu gan Y Loteri Fawr - Arian i Bawb i alluogi cwblhau'r prosiect. Mae Darparwyr Gofal Plant Ynys Môn wedi bod yn rhan annatod o'r prosiect hwn ers ei ddechreuad.

Âr ariannu hwn dyluniwyd cardiau gweithgaredd '**Sut Mae'ch Gardd yn Tyfu?**' a chyflenwyd y gweithgareddau terfynol i'r Lleoliad Gofal Plant.

Mae'r gweithgareddau wedi eu hanelu at blant 3 i 11 blwydd oed, gan The activities are aimed at children aged 3 to 11 years old, gan ganolbwyntio ar sgiliau newydd sy'n gysylltiedig â garddio, yr amgylchedd ac ailgylchu drwy weithgareddau hwyliog ac ymgysylltiol Cwmpesir amryw o bynciau, yn cynnwys sut i aildefnyddio gwrthrychau i wneud tai gwydr a photiau plannu, a sut i greu compost. Mae'r gweithgareddau hefyd yn annog plant i ddysgu am bwysigrwydd tyfu eu bwyd eu hunain tra byddant yn ennill gwybodaeth a sgiliau gan bobl fwy profiadol o'u cwmpas.

Cyflwynodd ein Swyddog Hyfforddi yng Ngogledd Cymru y gweithgareddau newydd, gwell, ynghyd â set o gardiau gweithgaredd i Ddarparwyr Gofal Plant Ynys Môn, ac yn dilyn y sesiwn cafwyd gwerthusiad.

Allan o sgôr posibl o 5 (1 i gynrychioli gwael a 5, rhagorol), roedd y Gweithwyr Chwarae o'r farn fod cynnwys, strwythur a threfn yr hyfforddi'n dda, gan roi sgôr o 5 allan o 5 iddo, ac felly'r cyflwyniad hefyd, gan sgorio 5 allan o 5.

Ymhlith y sylwadau yr oedd:

- **“Roedd hynny'n hyfforddi da, yr holl blant mewn gwahanol grwpiau oed, a phawb yn mwynhau, yn enwedig yr offer. Do'n ni ddim yn deall hynny – roedd yn syniad rhyfeddol.”**
- **“Syniadau da ar sut i wneud garddio gyda'r palnt.”**
- **“Roedd yr hyfforddwr yn wybodus iawn.**
- **“Eglurodd gam wth gam i'r plant yr hyn yr oedd angen iddynt ei wneud, mewn ffordd ddiogel a hwyliog,**

Fe wnaeth y staff y sylw yn ogystal fod y Swyddog Hyfforddi wedi darparu syniadau da, ac roeddent yn awyddus i barhau â'r prosiect ac ymgysylltu â'r gymuned leol drwy ddod â phlant a Gweithwyr Chwarae o Glwb Gofal Plant Allysgol St Mary's, Darparwyr Gofal Plant Ynys Môn at ei gilydd a chael gwirfoddolwry garddio o'r gymuend leol i weithio gyda'i gilydd i ddatblygu'r lle y tu allan i adeilad y Clwb.

Ymhlith rhai o sylwadau'r plant y mae:

- “(Ro'n i'n hoffi) plannu'r blodau, eu rhoi nhw yn y pridd”.
- “Ro'n i'n meddwl ei fod yn wych, Roeddwn i'n hoff o ddefnyddio'r morthwyl a'r hoelion”.
- “Adeiladu oedd fy hoff beth”.
- “Do'n i ddim yn hoffi aros am fy nhro i”.

Drwy drafod gyda nhw roeddent nhw wedi cyffroi i weld y perllysiau'n tyfu a datblygu eu gardd ymhellach.

# How Does Your Garden Grow?

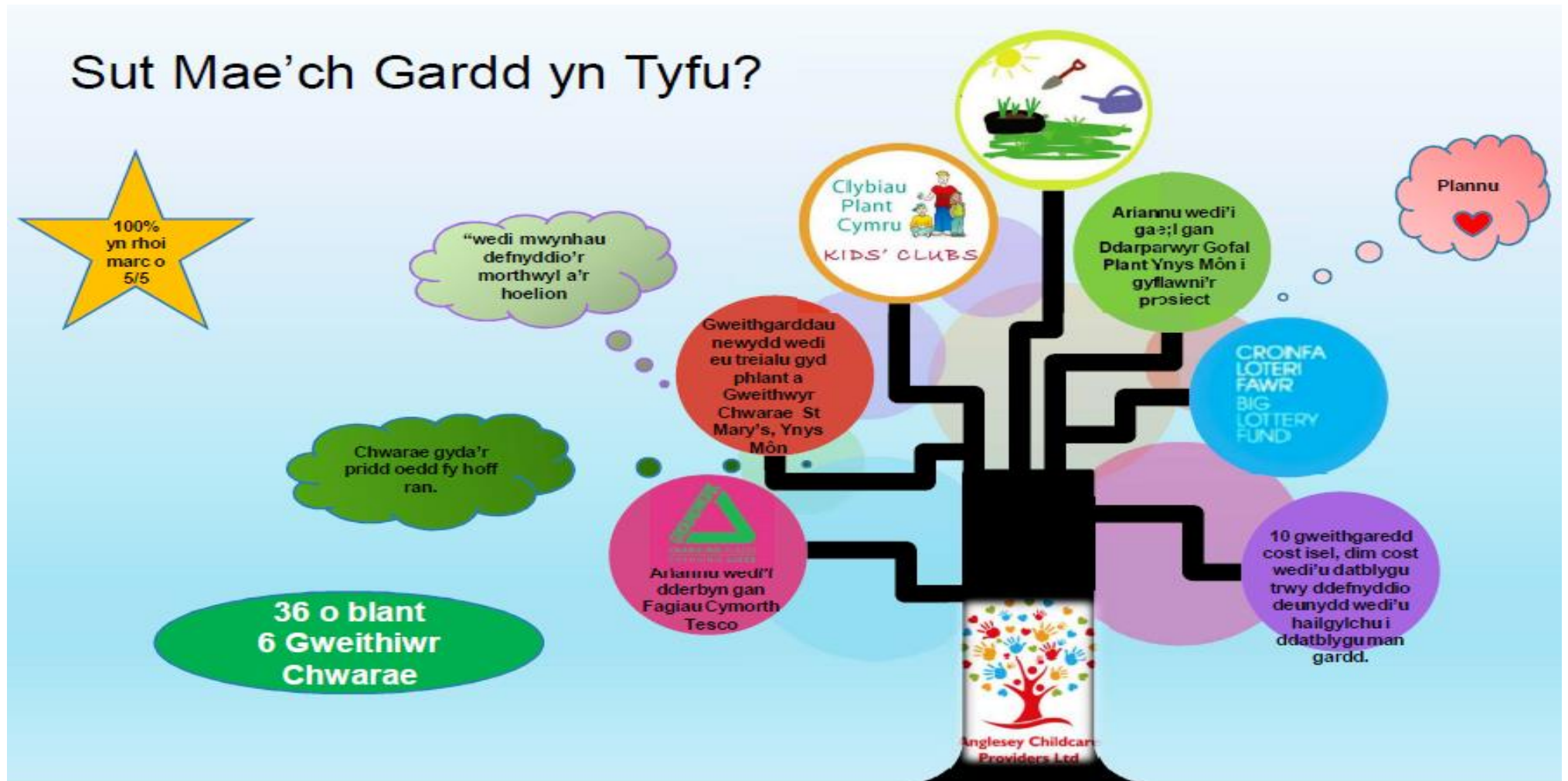
October 2019



Registered Office: Clybiau Plant Cymru Kids' Clubs, Bridge House, Station Road, Llanishen, Cardiff CF14 5UW  
 T: 029 2074 1000 F: 029 2074 1047 Email: [info@clybiauplantcymru.org](mailto:info@clybiauplantcymru.org)  
 Company limited by guarantee 4296436. Registered charity 1093260.

## Sut Mae'ch Gardd yn Tyfu?

Hydref 2019



Swyddfa Gofrestredig: Clybiau Plant Cymru Kids' Clubs, Tŷ'r Bont, Ffordd yr Orsaf, Llanisien, Caerdydd CF14 5UW  
 Ffôn: 029 2074 1000 Ffacs: 029 2074 1047 Ebost: [info@clybiauplantcymru.org](mailto:info@clybiauplantcymru.org)  
 Cwmni a gyfyngir trwy warant 4296436. Elusen gofrestrdedig 1093260