

# BENEFITS OF OUT OF SCHOOL CLUBS

Out of School Childcare Clubs offer care outside of the child's full time school day, running before school, after school and during the school holidays for children aged 3 - 11+ years. They enable parents and carers to work and train to improve their families' circumstances and are particularly important for lone parent/low income families and those who work away from the home. Qualified Playworkers provide experiences that are play rich and child led, boosting children's self-esteem and wellbeing and helping them develop a range of life skills for school staff, community members and [even 6th formers](#) 🌱

English, Welsh medium and bilingual clubs provide affordable, community based childcare, offering training and employment opportunities for school staff and community members.

Quality childcare settings tackle poverty and socio-economic disadvantage and improve outcomes for children. Aligned with the Community Focused Schools ethos, clubs impact positively on the lives of family and community members, helping to develop communities that are thriving, empowered and connected.

“We decided to develop Out of School Childcare on the site because we wanted to meet the needs of our families.” Clwb Hwl Filntshire

[Read More](#) 🌱

Listen to Clybiau Plant Cymru Kids' Clubs talk about the benefits of Out of School Childcare, how they align to the Community Focused Schools' ethos and how you can access support [here](#) 🗑️



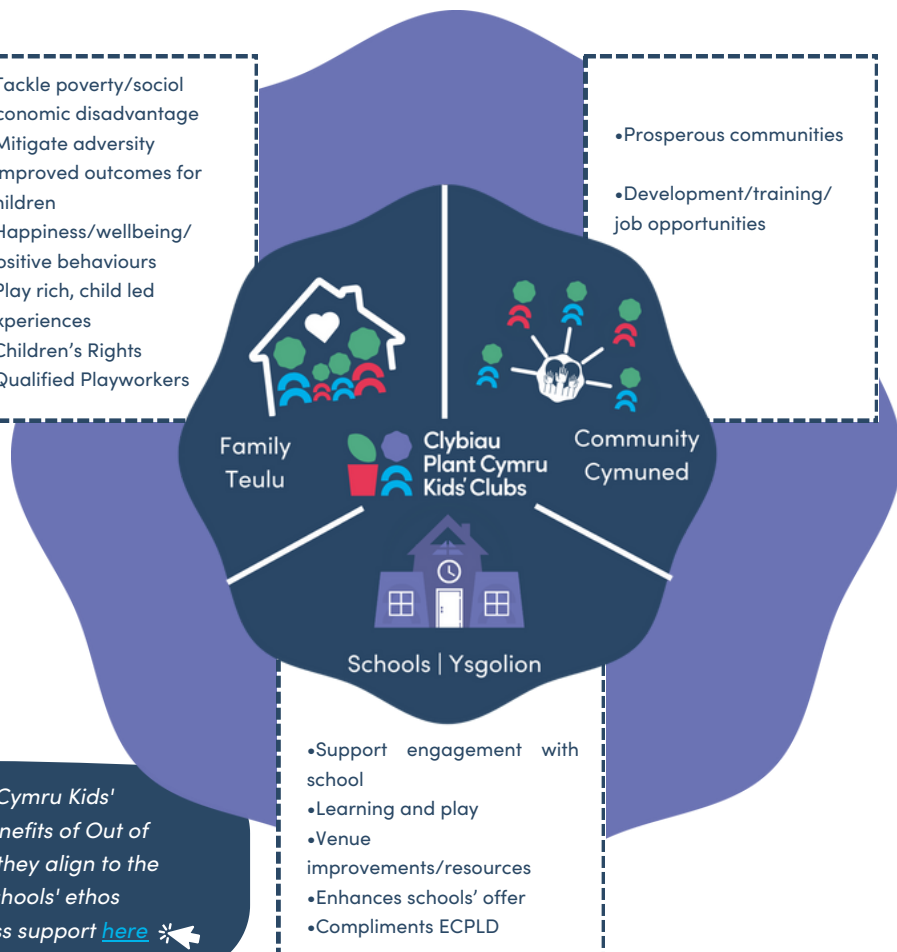
“It became clear very quickly that the parents who were interested in the school were looking for childcare including an after school club.”

“.....it was the key for pupils to have every opportunity to use the language.” Headteacher, Ysgol Gynradd Groes-wen Primary School. [Read More](#) 🌱



- Tackle poverty/social economic disadvantage
- Mitigate adversity
- Improved outcomes for children
- Happiness/wellbeing/ positive behaviours
- Play rich, child led experiences
- Children's Rights
- Qualified Playworkers

- Prosperous communities
- Development/training/ job opportunities



- Support engagement with school
- Learning and play
- Venue improvements/resources
- Enhances schools' offer
- Compliments ECPLD



*"The standard of the School's Teaching Assistants is excellent. Being able to offer them more hours on top of their salary as Assistants within the School, helps us as a school to keep our workforce.*

*Headteacher, Pennaeth Ysgol  
Gymraeg Casnewydd*

Clybiau Plant Cymru Kids' Clubs provides childcare business support, developing and supporting Welsh, English and bilingual out of school childcare clubs with:

- Regulation
- Governance
- Sustainability
- Quality
- Welsh language
- Playwork qualifications and CPD
- Resources

Visit [About Us](#) | [Clybiau Plant Cymru Kids' Clubs](#)



Clybiau Plant Cymru Kids' Clubs is the voice of Out of School Childcare Clubs in Wales and offers a range of business support and advice in relation to setting up, developing, and supporting Welsh, English and bilingual out of school childcare clubs.



*"Without the support [of [Cwlwm](#)], the concept of opening a Cylch/Club is much more challenging and as an organisation the school will have faced several difficult obstacles to overcome. Cwlwm forms a security chain that enables us to receive support, understand processes and succeed in opening provision for pupils in a new school which is part of the new area." Headteacher, Ysgol Gynradd Groes-wen Primary School.*

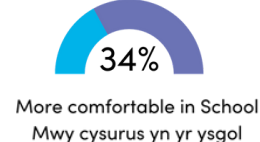
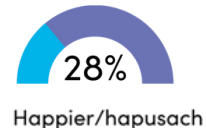
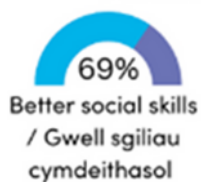
[Read More](#)

## What can schools do?



- Develop positive partnerships with existing clubs .Help promote their benefits.
- Provide a playful physical space or set up clubs.
- Signpost existing clubs to us for support e.g. registration, Welsh language.
- Provide management and staffing capacity.

## Benefits for children Y buddiannau i blant



*I have always recommended Clybiau Plant Cymru Kids' Clubs' to many services as I have had invaluable help and support from them since I started 11 years ago.'*



Mae Clybiau Gofal Plant All-Ysgol yn cynnig gofal y tu allan i ddiwrnod ysgol amser-llawn y plentyn; maent yn rhedeg cyn oriau ysgol, ar ôl oriau ysgol ac yn ystod gwyliau'r ysgol i blant 3 – 11+ blwydd oed. Maent yn galluogi rhieni a gofalwyr i weithio a hyfforddi a gwella amgylchiadau eu teuluoedd, ac maent yn arbennig o bwysig i deuluoedd rhiant unigol/incwm isel a rhieni sy'n gweithio i ffwrdd o'r cartref. Mae Gweithwyr Chwarae cymwysedig yn darparu profiadau sy'n gyfoethog mewn chwarae, o dan arweiniad y plant, gan hybu hunan-dyb a llesiant y plant a'u helpu i ddatblygu amrediad o sgiliau bywyd, i staff ysgolion, aelodau o'r gymuned a hyd yn oed [disgyblion chweched-dosbarth](#). 🌱

Mae clybiau Saesneg, cyfrwng-Cymraeg a dwyieithog yn darparu gofal plant sydd yn fforddiadwy yn eu cymunedau, gan gynnig cyfleoedd hyfforddiant a chyflogaeth i staff ysgolion ac aelodau'r gymuned.

Mae lleoliadau gofal plant o ansawdd yn mynd i'r afael â thlodi ac anfantais economaidd-gymdeithasol ac yn gwella canlyniadau i blant. Yn unol ag ethos Ysgolion Bro, mae clybiau'n effeithio'n economaidd-gymdeithasol ar fywydau aelodau teuluoedd a'r gymuned, yn eu helpu i ddatblygu cymunedau sy'n ffynnu, wedi'u grymuso ac yn gysylltiedig.

“Fe wnaethom benderfynu datblygu Gofal Plant All-ysgol ar ysafle am ein bod yn awyddus i ateb anghenion ein teuluoedd.”

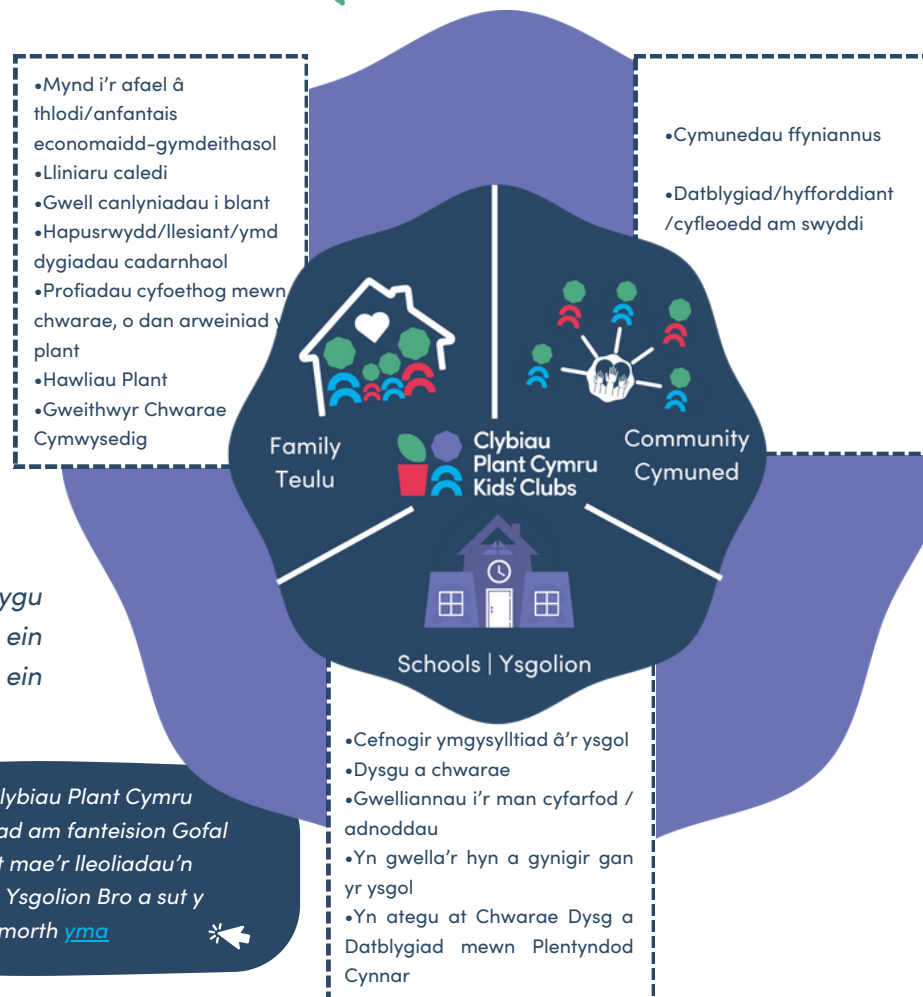
[Darllen Mwy](#) 🌱

Gwrandewch ar Clybiau Plant Cymru Kids' Clubs yn siarad am fanteision Gofal Plant All-Ysgol, sut mae'r lleoliadau'n cyd-fynd ag ethos Ysgolion Bro a sut y gallwch gyrchu cymorth [yma](#) 🗑️



“Daeth yn glir yn gynnar iawn fod y rhieni a oedd â diddordeb yn yr ysgol yn awyddus i gael gofal plant, yn cynnwys clwb ôl-ysgol.”

“.....roedd hyn yn allweddol bod disgyblion yn cael pob cyfle i ddefnyddio'r iaith.” Pennaeth, Ysgol Gynradd Groes-wen  
[Darllen Mwy](#) 🌱







*"Mae safon Cynorthwywyr Dysgu'r Ysgol yn rhagorol. Mae gallu cynnig iddyn nhw fwy o oriau ar ben eu cyflog fel Cynorthwywyr Dysgu yn yr ysgol yn ein helpu fel ysgol i gadw ein gweithlu".*

*Pennaeth Ysgol Gymraeg  
Casnewydd*

Mae Clybiau Plant Cymru Kids' Clubs yn darparu cefnogaeth i fusnesau gofal plant, drwy ddatblygu a chefnogi clybiau Cymraeg, Saesneg a dwyieithog gyda'u:

- rheoleiddio
- llywodraethiad
- cynladwyedd
- ansawdd
- yr iaith Gymraeg
- cymwysterau Gwaith Chwarae a Datblygiad Proffesiynol Parhaus (DPP)
- Adnoddau

Ewch i [Amdanom Ni | Clybiau Plant Cymru Kids' Clubs](#)



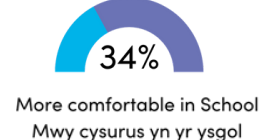
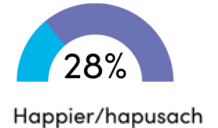
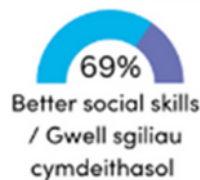
Clybiau Plant Cymru Kids' Clubs yw llais Clybiau Gofal Plant All-Ysgol yng Nghymru; mae'n cynnig amrediad o gefnogaeth a chynghor i fusnesau mewn perthynas â sefydlu, datblygu a chefnogi clybiau gofal plant all-ysgol Cymraeg, Saesneg a dwyieithog.



*"Heb y gefnogaeth [gan [Cwlwm](#)] mae'r cysyniad o agor Cylch/Clwb yn llawer mwy heriol, ac fel sefydliad byddai'r ysgol wedi gorfod wynebu nifer o rwystrau anodd eu goresgyn. Mae Cwlwm yn darparu cadwyn ddiogelwch sy'n ein galluogi i gael cefnogaeth, dell prosesau a llwyddo i agor darpariaeth i ddisgyblion mewn ysgol newydd sydd yn rhan o'r ardal newydd"* [Darllen Mwy](#)



## Benefits for children Y buddiannau i blant



## Beth all ysgolion ei wneud?



- Datblygu partneriaeth gadarnhaol â'r clybiau presennol. Helpu i hyrwyddo eu manteision.
- Darparu lle materol chwareus neu sefydlu clybiau.
- Cyfeirio clybiau presennol atom ni am gymorth e.e. gyda chofrestru, yr iaith Gymraeg.
- Darparu capasiti rheoli a staffio.



*Rwyf o hyd wedi argymhell Clybiau Plant Cymru Kids' Clubs i nifer o wasanaethau gan fy mod wedi cael help a chefnogaeth amhrisdiadwy ganddyn nhw ers imi ddechrau 11 blynedd yn ôl."*

